

# Technical Data

## Display

Type	TFT
Colors	65535
Diagonal (inch)	19
Format	5:4
Resolution	1280 x 1024 pixels
Back lighting	LED
Durability at 25 °C	Approx. 50.000 h
Brightness	350 Cd/m <sup>2</sup> (center, type)
Contrast	1000 : 1 (type)

## Touch Display

Technology	PCT (projective capacitive touch)
Multitouch	2-fold
Surface	3 mm safety glass, antireflective chemical coating, UV resistant
Transparence	Light transmission 86%

## Interfaces

Ethernet	1 x RJ45 (1 Gbit)
USB	3 x USB 2.0
Serial interfaces	2 x RS232/422/485 selectable
Profibus-DP Slave	With additional module (optional)
Profibus-DP Master	With additional module (optional)
Profinet-IO	With additional module (optional)
Extension Display (opt.)	Interface for a second monitor

## Processor

CPU	AMD G-T40R 1 GHz singlecore
-----	-----------------------------

## Memory

RAM	1 GB bis 4 GB
CF card	256 MB bis 16 GB
Add. storage media	SSD, solid-state disk (optional)

## Clock

Hardware clock	Buffered, can be synchronized
----------------	-------------------------------

## Extensions

Digital I/O	With additional module: 16 inputs, 16 outputs (optional)
REDIS 2019 Extension Display	Second 19-inch monitor for REDIS 2019 (without touch display)

## Electrical Connection

Power supply	24 V DC, -15% to +20% acc. to IEC 1131-2
Current drawn	Approx. 3 A
Power consumption	Approx. 60W

## Protection

Front	IP 65 acc. to EN 60529
Rear	IP 20 acc. to EN 60529

## Environmental Conditions

Operating temp.	0 to 50 °C
Storage temperature	-20 to 60 °C
Relative humidity	<80 %

## Housing

Overall dimensions	468 x 392 (W x H) in mm
Cut-out dimensions	450 <sup>+1</sup> x 374 <sup>+1</sup> (W x H) in mm
Mounting depth	Approx. 80 mm without connector
Front panel	Safety glass with aluminum bezel, silver anodized
Housing lid	Stainless steel
Weight	Approx. 8 kg (without options)

## Certificates and Approvals

CE conformity	EN 61000-6-4 emission EN 61000-6-2 immunity
---------------	--

## Operating Systems

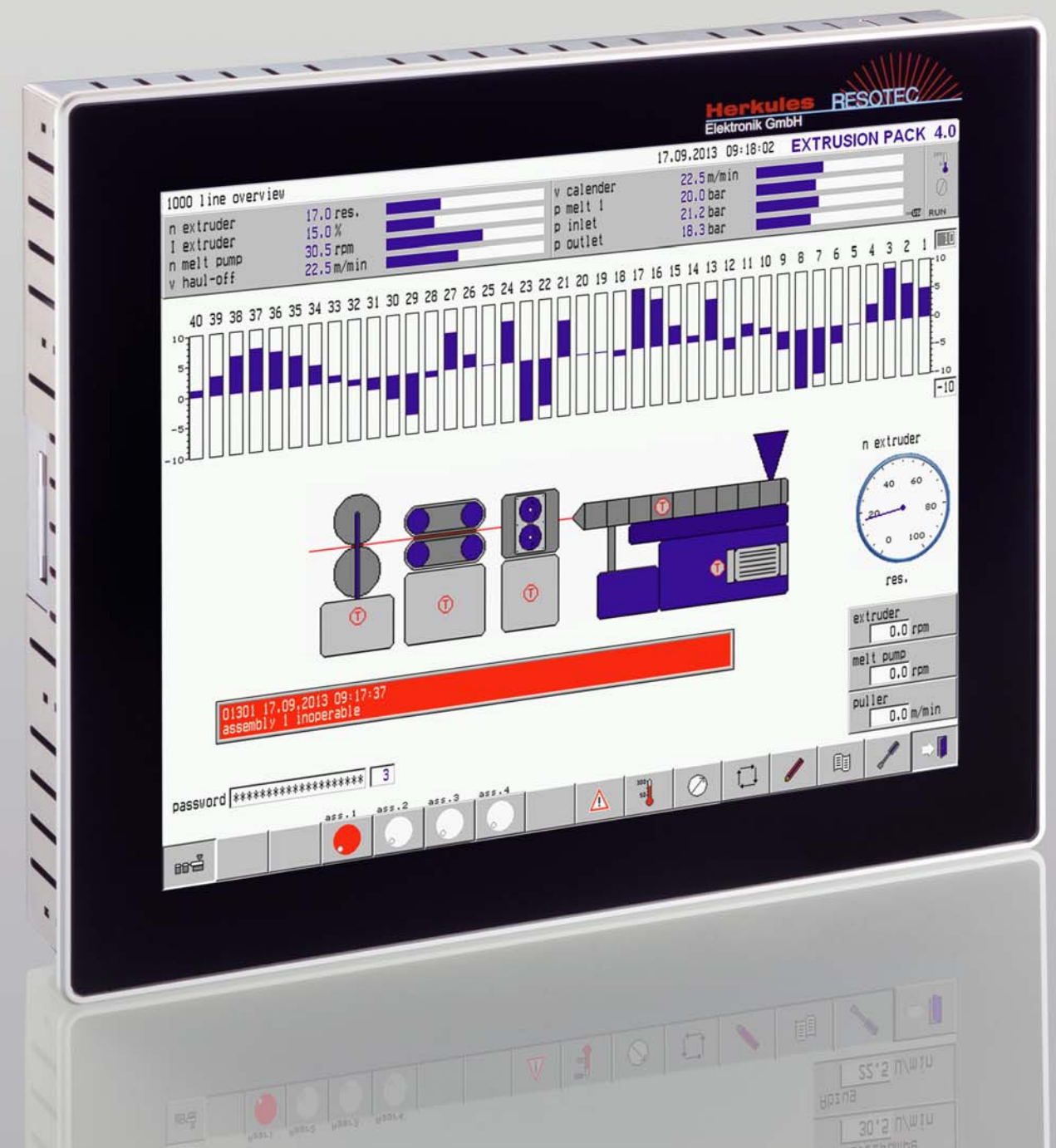
RT Target™	Version 15.20
RT Target™ with soft PLC	Codesys™ version 2.3 (optional)
Windows™	Supported interfaces: Ethernet RJ45, USB (optional)
Projecting	VISU4WINners from version 10 (using RT Target™)

## Communication Protocols

Profibus-DP Slave; S7-Ethernet; Profinet IO (optional); Modbus RTU: VNC Server (optional software licence); VNC Client (opt. software licence); FTP Server (TCP/IP); Resotec OPC; Profibus-DP Master (optional using soft PLC); Modbus IP (optional using soft PLC)
---



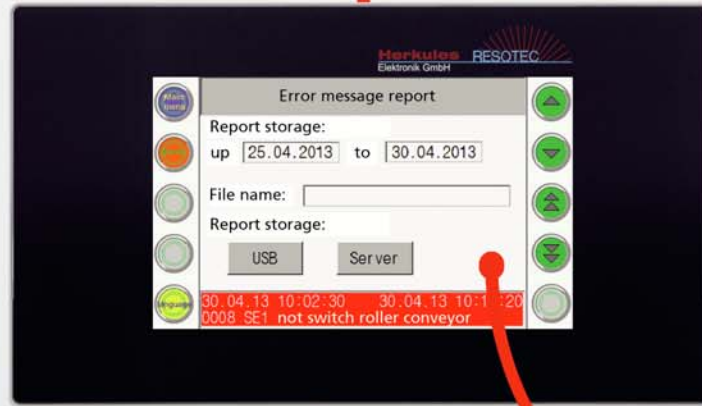
# REDIS 2019 Control Panel 4.0



# REDIS 2019

## Visualization, Operation and Control Master Solution for Machine and Plant Automation

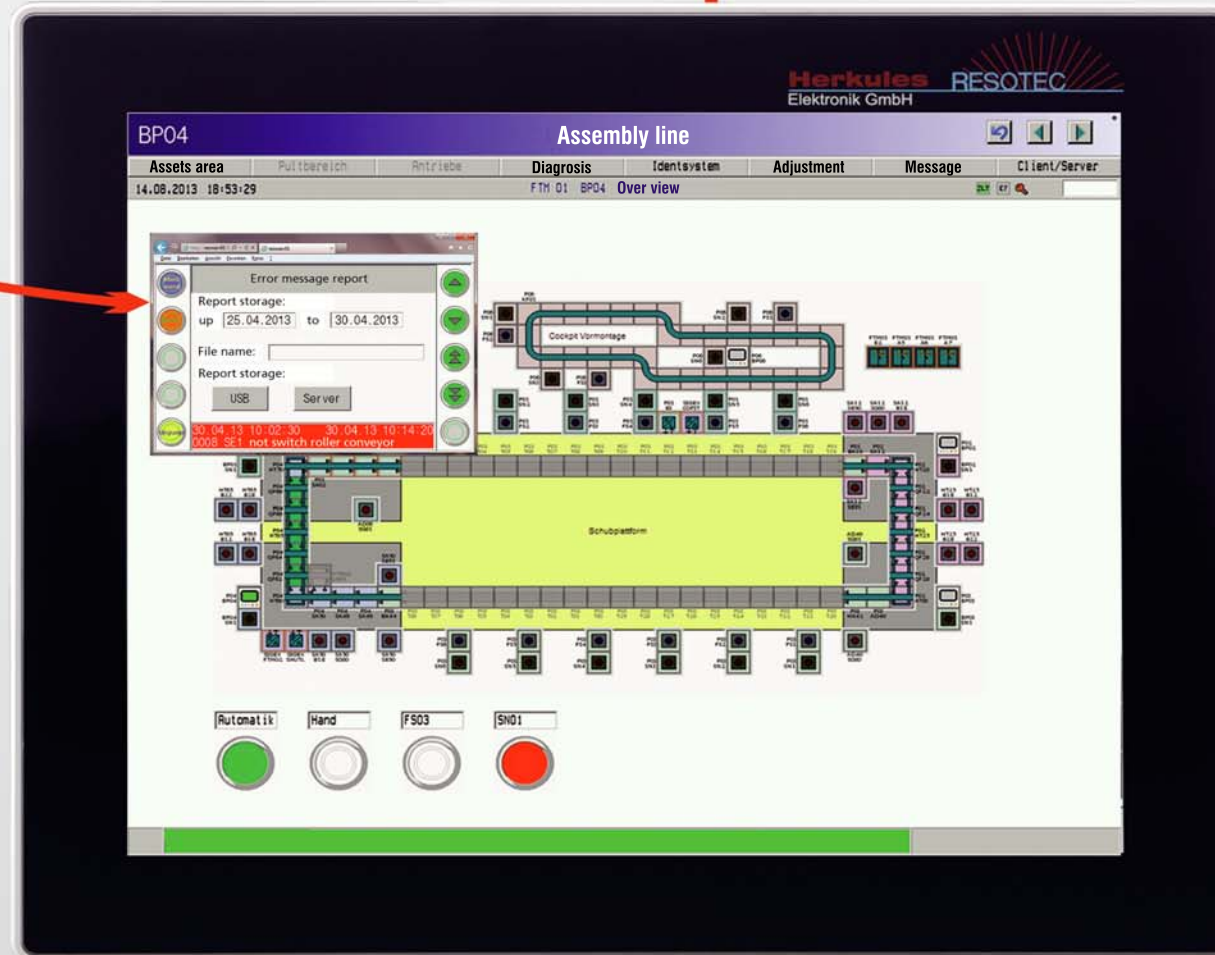
LAN



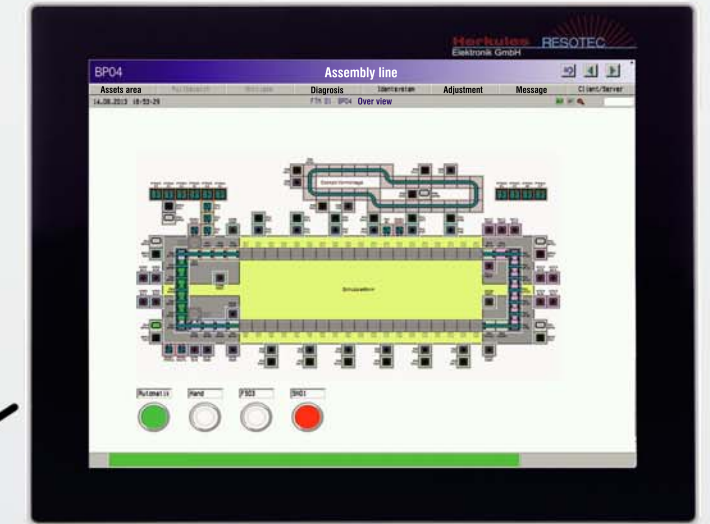
REDIS 180 / REDIS 2007

The REDIS series is well prepared for communication within an IT network structure. Acting as a server, the units can provide machine and plant data for the remaining IT equipment. When using HTML pages, REDIS units can be viewed by standard web browsers. As clients, REDIS units access the other computers in the network, thus ensuring on-site availability of external data.

With a 19-inch screen diagonal, the REDIS 2019 Multi-Touch Control Panel makes it possible to display even large plants in a clearly arranged structure. Its robust, antireflective safety glass front with integrated touch display is completely wear-free. Applications can be run under the RT-Target real-time operating system or under Windows Embedded 7®.



REDIS 2019 Control Panel 4.0

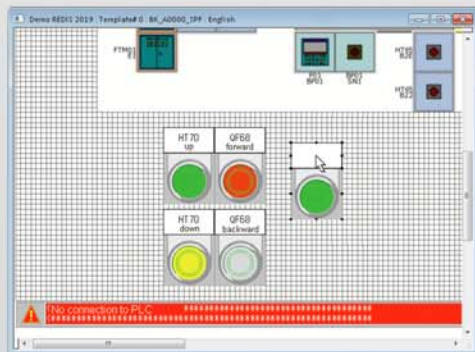


REDIS 2019 Extension Display  
A second monitor can be used to view the same content as on the master display.

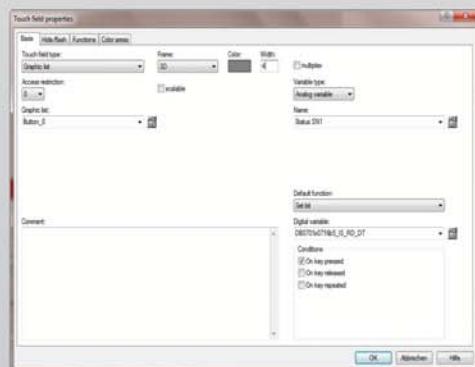


Graphics-based projecting tool for efficient, target-controlled projecting. Easy projecting at the example of an illuminated pushbutton module:

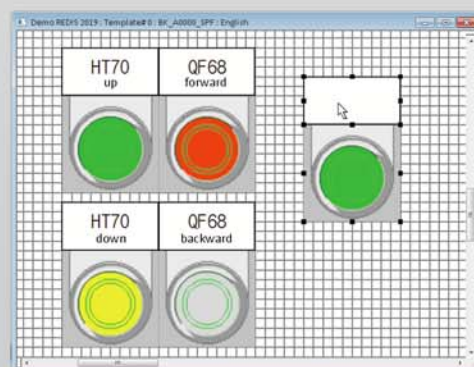
1. Selection of a design from an extensive graphics library



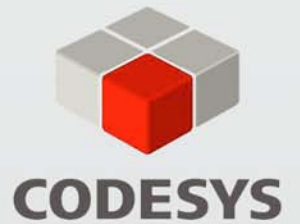
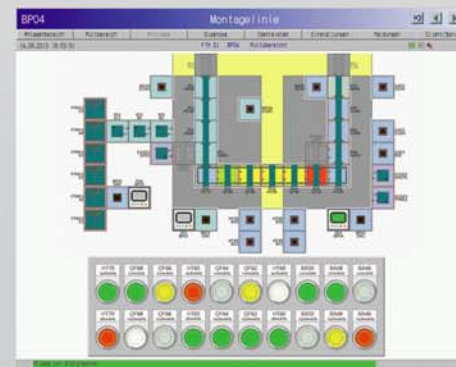
2. Parameterization of various display states, e.g. green, amber, red.
3. Determination of key functions, e.g. set bit, page selection, etc.



4. Comprehensive function library, interface for customer-specific functions.
5. Easy labelling in any format. Multilingual operation with on-line language selection.



6. Once programmed, illuminated pushbuttons can be reused as many times as necessary.
7. Multiplication of controls and individual adaptation of parameter setting.



### Integrated PLC

The commercially available CODESYS™ soft PLC can be used to develop a PLC program according to IEC-61131-3 for operation on REDIS 2019. Experienced users will be familiar immediately with the FUP, AWL, ST, KOP and CFC programming languages. Via the optional digital inputs and outputs of REDIS 2019, simple control tasks can be realized without additional hardware. For exacting control tasks, REDIS 2019 communicates via the well-established field bus systems using a separate I/O process interface.

